

2018 YEAR IN REVIEW

# IDAHO OFFICE OF EMERGENCY MANAGEMENT





- 02 Message from Director Brad Richy
- 03 History and Role of IOEM
- 04 FEMA Federal Integration Teams
- 05 Hazard Mitigation Program
- 07 Idaho Wildfires in 2018
- 08 Plans Section
- 09 Recovery
- 10 Emergency Relief Funds (ERF)
- 11 Idaho Emergency Operations Center (IDEOC)
- 12 How IOEM and the Joint Staff Work Together
- 13 Idaho Public Information Emergency Response Team
- 14 IOEM Produces Earthquake Preparedness Video for Idaho Schools
- 15 Emergency Management Assistance Compact (EMAC) Deployments
- 17 IOEM Training and Exercise Program
- 18 Crude Oil Train Derailment Exercise
- 19 Area Field Office Regions
- 20 IOEM Geographic Information System (GIS) | RiskMAP
- 21 Idaho Public Safety Communications Commission (IPSCC)
- 22 IOEM Unveils New Ida Book Written with Idaho First Lady Lori Otter
- 23 Grants Branch
- 24 Hazmat and Special Teams
- 25 WebEOC | FirstNet | IOEM Selected to Participate in National Governor's Association Program to Enhance Energy Resilience
- 26 Looking Ahead: New IOEM Website





## Message from Director Brad Richy



2018 was a year in which Idaho's Office of Emergency Management had a lot to be proud of. While the response and recovery from the snow, flooding, and fire that we experienced in 2017 was not our main focus, many other types of events affected our communities, emergency management organizations, and personnel in different ways.

As the complexities of our emergencies change from year to year, so must our preparation, response, and recovery. We built on our collective experience this year to lead and coordinate preparation to advance a greater statewide resiliency. I believe resiliency is the foundation of our future that runs across infrastructure, planning, and emergency management. Resiliency requires the development and sustainment of programs that reduce our vulnerability and shorten our recovery time before the next disaster strikes.

Idaho's Office of Emergency Management and our staff have come a long way over the years as we continue to learn and improve our processes for what those future emergencies might present. We have spent a great deal of time fine-tuning our response and recovery plans, identifying necessary resources, and ensuring we have experienced staff in place to effectively manage and respond to the threats, hazards, and risks that can happen at any time. To build an even closer relationship and strengthen readiness across the nation, Idaho was recently selected as one of the first states to have FEMA staff integrate with IOEM. FEMA staff will live in Idaho and work locally with IOEM and Idaho's communities. This new approach will enhance Idaho's customer experience, build more resilient communities, and ensure more effective response and recovery operations before, during, and after an incident.

All of this work is done in cooperation with our emergency management stakeholders across the state. I would like to recognize the commitment of Idaho's communities, emergency managers, and volunteers who provide the necessary leadership and professionalism to do an incredible job to protect Idaho.

# History and Role of IOEM

The Idaho Office of Emergency Management is a critically important division of the Idaho Military Division. IOEM is the state's emergency management agency tasked by Idaho code with providing assistance to the 44 counties and four Tribes in managing man-made and natural disasters in the state. The Idaho Emergency Operations Center (IDEOC) is housed within IOEM at Gowen Field in Boise, Idaho, and is a central hub for coordination efforts and situational awareness during a disaster.

Prior to September 11, 2001, what is now IOEM was the Bureau of Disaster Services (BDS). After 9/11 the Homeland Security Act of 2002 led to a reorganization at the federal and state level. In 2004, the Idaho Disaster Preparedness Act was amended merging BDS with the Bureau of Hazardous Materials and creating the Idaho Bureau of Homeland Security. In 2016 our name was changed once again, to Idaho Office of Emergency Management, a name that better communicates our role.



IOEM Branches are comprised of different sections and programs dedicated to **Prevention, Protection, Mitigation, Response, and Recovery** efforts related to emergency management incidents in Idaho.

IOEM is part of FEMA Region 10 which includes Alaska, Idaho, Oregon, and Washington. The regional office is in Bothell, Washington. State partners work to build resilience, and fulfill the mission to help people before, during, and after disasters.



# FEMA Federal Integration Teams

Idaho became one of ten states in 2018 to have FEMA staff assigned to its emergency management agency. The FEMA Integration Team (FIT) provides technical and training assistance on FEMA's programs. The FEMA staff will support IOEM in a variety of ways, and further enhance a culture of preparedness.

***By having the FEMA Integration Team on-site, working side-by-side with the IOEM team, we can better prepare and coordinate for potential disaster events and improve our coordination across all programs.***

Brad Richy, IOEM Director



**FEMA REGIONAL LEADERSHIP** (Left to Right)

PETER GAYNOR: FEMA Deputy Administrator :: BRAD RICHY: IOEM Director  
MIKE O'HARE: FEMA Regional Administrator :: SHARON LOPER: FEMA Deputy Regional Administrator



**FEMA INTEGRATION TEAM** (Left to Right)

KYLE MCCORMICK: Hazards Mitigation Planner :: KEITH MALLARD: Operational Planning Specialist  
RIC WILHELM: Tactical Communications Task Force Leader :: JUSTIN SALUS: FEMA Integration Team Lead

# Hazard Mitigation Program

The update and approval of the 2018 State of Idaho Hazard Mitigation Plan (SHMP) was a significant and critically important milestone for the Mitigation Section and SHMP planning team at IOEM. Mitigation efforts provide long-term risk reduction programs that build resiliency to multiple hazards, so maintaining a current plan benefits communities throughout the state. The Mitigation Section processed more than 20 project applications totaling more than \$8 million, which are pending FEMA review and award.

## SHMP Key Partners:

- Idaho Department of Water Resources
- United States Army Corps of Engineers (USACE)
- Idaho Geological Survey
- Idaho Department of Transportation
- Idaho Department of Health and Welfare
- Idaho Department of Environmental Quality
- Boise State University
- United States Geological Survey (USGS)
- Idaho State Police
- Idaho Department of Lands
- Idaho Department of Fish and Game
- Idaho Department of Agriculture
- Local Highway Technical Assistance Council
- National Weather Service
- Idaho Military Division
- Idaho National Laboratories
- Boise Project Board of Control
- United States Department of Agriculture (USDA)
- Idaho Office of Emergency Management

## Hazard Mitigation Planning



is a process that identifies natural hazard risks and develops strategies to reduce these risks.

## TOP 3 IDAHO HAZARDS



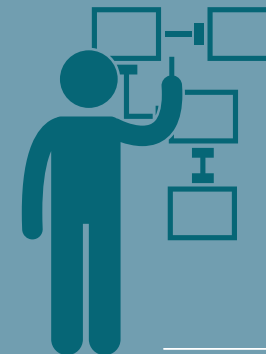
SEVERE  
STORM



WILDFIRE



FLOOD

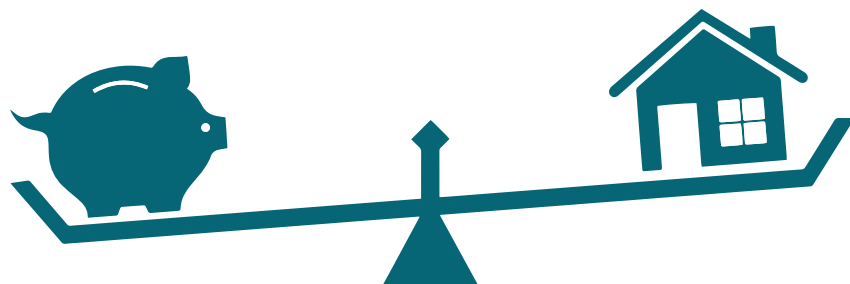


## The Benefits

THE GREATEST VALUE OF A HAZARD MITIGATION PLAN IS IN THE IMPLEMENTATION OF COST-EFFECTIVE MITIGATION MEASURES THAT REDUCE OR ELIMINATE SHORT- AND LONG-TERM RISK TO LIFE AND PROPERTY.

**SAVES LIVES • RESTORES ECONOMIC VITALITY  
REDUCES DAMAGES • BUILDS RESILIENCE**

## MORE MITIGATION, MORE SAVINGS.



**\$1 SPENT ON MITIGATION = \$6 DISASTER SAVINGS**

### MITIGATION PLANS

- Provide opportunities to collaborate and integrate plans and community projects
- Educate the public on risks and vulnerabilities to hazards
- Fulfill requirements that 5-year updates are current
- Afford pre and post disaster funding opportunities

**Congratulations to the following counties on All Hazard Mitigation Plan 2018 approvals: Coeur d' Alene Tribe, Bonner, Shoshone, Owyhee, Boise, Lincoln, Cassia, Minidoka, Franklin, Bear Lake, and Caribou.**

Plan updates in process: Nez Perce Tribe, and the counties of Lewis, Latah, Nez Perce, Valley, Washington, Gem, Payette, Elmore, Butte, Jefferson, and Madison, along with Boise State University.

### MITIGATION PROJECTS

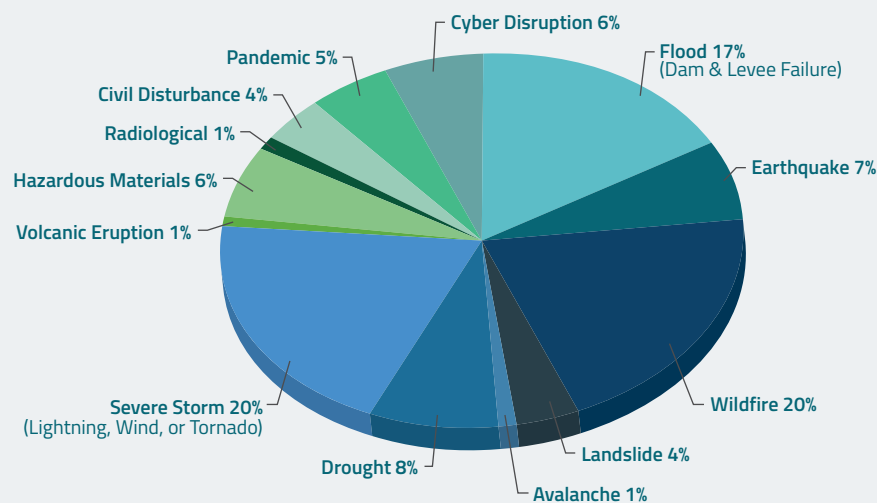
- Contribute to safer jurisdictions
- Reduce future damages through implementing mitigation strategies
- Save disaster costs - \$1 spent on mitigation results in \$6 disaster savings
- Require collaboration and pre-planning for detailed application, long review and award timeframe, and 3-year performance periods

**Congratulations to Timberlake Fire District and Kootenai County for completing mitigation projects in 2018!**

Coeur d'Alene Tribe, Teton County, and City of Blackfoot projects are making progress.

### HAZARD IMPORTANCE SURVEY RESULTS

In 2018, the IOEM Hazard Mitigation Team conducted a statewide survey of county officials, state employees, and citizens on the state's threats, hazards, and risks.





# Idaho Wildfires in 2018

Wildfires in Idaho in 2018 caused significant destruction, but thankfully, no loss of life. The Rattlesnake Fire in southern Idaho County and northern Adams County had the potential for major impact to communities near Riggins. At several times evacuations were recommended by the fire management teams, and subsequently issued by Sheriff's Offices. Fortunately no homes were lost prior to containment. The Goose Rapids Fire in Nez Perce County also had the potential to go big due to its location in the hot, dry, and combustible Hells Canyon region. A strategy by wildland fire agencies to pre-stage a task force of equipment and personnel during the height of fire season was instrumental in suppressing the fire before it could expand and cause major loss of acreage.

In July, lightning ignited the Grassy Ridge Fire in Eastern Idaho. Arid conditions and high winds fueled the fast-moving blaze, prompting evacuations in the town of Dubois as the fire burned as close as two and a half miles away. The threat led to a FEMA declaration for a Fire Management Assistance Grant (FMAG) to provide financial aid to eligible agencies that provided personnel, equipment and materials to the firefighting efforts. By the time mop-up efforts concluded, the fire had burned close to 100,000 acres.

In big fire years and when fire activity is relatively small, IOEM works with communities to plan, prepare, and mitigate the effects of fires in our state. An important and highly effective method for sharing fire information before, during, and after a fire, is our yearly wildfire awareness messaging through social media, the IOEM newsletter, and community outreach.







# Plans Section

The IOEM Plans Section maintains the Idaho Emergency Operations Plan, and the Continuity of Operations Plan. Both these documents are essential to the state's effectiveness when responding to both natural and man-made disasters in Idaho.

In 2018 the Plans Section worked closely with the IOEM Training and Exercise section to conduct several Continuity of Operations (COOP) focused exercises. The Plans section also worked closely with multiple State Agency COOP Planners for a Mission Essential Functions workshop. This provided critically important information to our state partners regarding what duties they will carry out in the event our COOP plan is activated. In June, IOEM employees participated in a table top exercise to evaluate and update our own agency's essential functions as part of the larger IOEM COOP Plan update for the year.

Beginning in 2018, FEMA introduced a new methodology for jurisdictions to use to complete what is called the Threat and Hazard Identification and Risk Assessment (THIRA) and Stakeholder Preparedness Review. With a new approach to the THIRA process, the Plans Section took the opportunity to start fresh with evaluating an updated set of threat and hazards with new scenarios.

In July, Idaho was invited to participate with four other states in a workshop focused on three elements of public health response to disasters hosted jointly by the National Emergency Management Association (NEMA) and HHS Assistance Secretary for Preparedness and Response (ASPR). IOEM and ESF-8 coordinating agency Idaho Department of Health and Welfare's Bureau of EMS and Preparedness partnered together to plan for and attend the workshop. The workshop improved coordination between the agencies and identified several gap areas to incorporate into future planning efforts.



(From Left to Right) BLAKE BRANDON: IOEM Planner  
MAIJA REED: IOEM Planner :: MALLORY WILSON: IOEM Plans Section Chief

# Recovery

IOEM Disaster Recovery efforts in 2018 focused on continued financial, and technical assistance to the 26 counties affected by unprecedented disasters in 2017. As local jurisdictions continue their efforts to repair and rebuild from the events of 2017 that triggered five State Proclamations and four Presidential Declarations, the Idaho Office of Emergency Management continues to process claims, and provide support to the impacted jurisdictions.

Three disasters in 2018 prompted additional IOEM response and recovery efforts; early spring flooding in Madison and Clark Counties led to widespread road and infrastructure damage, while late spring flooding caused additional destruction in the north central area of Idaho. Both events prompted State Proclamations of disaster and recovery assistance. In July, the fast-moving Grassy Ridge Fire in Clark County forced evacuations in the town of Dubois and led FEMA Region 10 to approve the State's request for a Fire Management Assistance Grant (FMAG) to provide financial support for recovery efforts. IOEM continues to provide support in processing disaster cost claims until all affected and eligible jurisdictions are reimbursed to the fullest extent possible.

DISASTER	NUMBER OF PROJECTS	ESTIMATED COST
<b>DR-4310</b> SEVERE WINTER STORMS & FLOODING BINGHAM, CASSIA, ELMORE, FRANKLIN, GOODING, JEFFERSON, JEROME, LINCOLN, MINIDOKA, TWIN FALLS AND WASHINGTON COUNTIES	129	\$9,744,131
<b>DR-4313</b> SEVERE STORMS, FLOODING, LANDSLIDES & MUDSLIDES BONNER, BOUNDARY, CLEARWATER, IDAHO, KOOTENAI, LATAH, SHOSHONE AND VALLEY COUNTIES	99	\$13,194,386
<b>DR-4333</b> FLOODING, LANDSLIDES & MUDSLIDES BLAINE, CAMAS, CUSTER, ELMORE AND GOODING COUNTIES	47	\$4,264,296
<b>DR-4342</b> FLOODING ADA AND CANYON COUNTIES	43	\$3,819,692







# Emergency Relief Funds

The \$50 million IOEM Emergency Relief Fund (ERF), was created in 2017 to provide assistance to counties whose road and bridge infrastructure was impacted by severe winter weather. The fund has now helped 35 of Idaho's 44 counties recover from the snow and flood disasters of 2017.

As IOEM heads into the third year of this successful program, ERF projects throughout the state are being completed regularly, and reimbursements are being provided. Funding from the ERF continues to be offset by money from FEMA-eligible projects, further maximizing the state's General Fund commitment to this program.

## 2018 HIGHLIGHTS

**\$50 MILLION**  
TO PROVIDE EMERGENCY RELIEF TO COMMUNITIES  
FACING SEVERE ROAD AND BRIDGE DAMAGE DUE TO  
THE EXTREME WINTER WEATHER OF 2017.



**OVER 90 LOCAL AGENCIES –**  
counties, cities and highway  
departments awarded ERF funds.



**200+**  
infrastructure  
projects completed

**500+** PROJECTS AWARDED

**602** ORIGINAL APPLICATIONS SUBMITTED

**\$50,000,000** AWARD TOTAL

**\$20,881,710** FUNDS DISPERSED

### EMERGENCY RELIEF FUND PANEL

STATUTORILY DEFINED WITH  
THE FOLLOWING MEMBERS:

- Idaho Office of Emergency Management
- Local Highway Technical Assistance Council
- Idaho Transportation Department
- Association of Highway Districts
- Association of Counties
- Governor's Office
- Association of Cities



# Idaho Emergency Operations Center

The Idaho Emergency Operations Center (IDEOC) is the central hub for coordinating state efforts, and situational awareness, during a natural or man-made disaster. When the Governor signs a state declaration and emergency support functions (ESFs) are activated the facility is staffed to immediately assist with response and recovery efforts.

In 2018, 36 trainings and/or drills on IDEOC operations and capabilities were offered for IOEM staff and reservists, as well as state agency, county, and Tribal coordinators. This training reinforces a cohesive and coordinated response when the EOC is activated due to a natural or man-made disaster or emergency. These capabilities can be immediately utilized at the Continuity of Operations (COOP) site when access to the IDEOC facility on Gowen Field is not available.

## EMERGENCY SUPPORT FUNCTIONS (ESFS) IN THE EOC



ESF 1  
Transportation



ESF 5  
Emergency  
Management



ESF 9  
Search and Rescue



ESF 13  
Public Safety  
and Security



ESF 2  
Communications



ESF 6  
Mass Care, Emergency  
Assistance, Housing,  
and Human Services



ESF 10  
Hazardous Materials  
/ Weapons of Mass  
Destruction



ESF 14  
Long-Term Community  
Recovery and Mitigation



ESF 3  
Public Works  
and Engineering



ESF 7  
Resource and  
Logistics Support



ESF 11  
Agriculture and Food



ESF 15  
Public Information  
and External Affairs



ESF 4  
Firefighting



ESF 8  
Public Health and  
Medical Services



ESF 12  
Energy



ESF 16  
Military Support

## IDEOC ACTIVATION LEVELS

There are four levels of IDEOC activation, communicating changes in state emergency management response activity. A change up or down in activation level is an indicator that the number, size, or complexity of an event, single incident, or combination of incidents has changed.

At any level of activation, the IDEOC will work to create a common operating picture among state, local, and federal agencies. Emergency Management partners and the public will be informed through publication of reports, including news releases, media interviews, information posted on the IOEM website, social media, and WebEOC – the state of Idaho's information sharing platform.

### MONITORING

IOEM normal operations. The IDEOC is not activated, and IOEM staff work their day-to-day activities, including monitoring any potential emerging issues.

### LEVEL 3 ACTIVATION

An incident is likely to occur or has occurred. Jurisdictional disaster or emergency declarations are in place or anticipated, and a state proclamation of disaster emergency may be in effect or imminent.

### LEVEL 2 ACTIVATION

There are multiple ongoing incidents, or a large scale (multi-jurisdictional, statewide) incident has occurred. Actual or potential impact from the incident requires a high amount of direct state assistance for response and recovery efforts. Mutual aid agreements or federal assistance may supplement the response.

### LEVEL 1 ACTIVATION

An event that overwhelms the state's ability to respond effectively to a disaster without external assistance is happening. Actual or potential impacts on public health, welfare, and infrastructure requires an extreme amount of direct state and federal assistance and mutual aid for response and recovery. The Governor is requesting a Presidential Disaster or Emergency Declaration.

## How IOEM and the Joint Staff Work Together

The Joint Staff and IOEM both fall under the umbrella of the Idaho Military Division. The Joint Staff is made up of thirty individuals from both the Army and the Air National Guard.

The Joint Staff is the method by which a Dual Status Commander is activated, opening the door for federal military forces to join an effort if the situation warrants. The Joint staff takes the lead role in all matters pertaining to Emergency Support Function (ESF) 16 – Military Support.



Brad Richy Director of Joint Staff, Idaho National Guard, salutes during the national anthem while participating in the Hanuman Guardian 2018 opening ceremony Aug. 20 at the Royal Thai Army's Cavalry Center in Thailand's Saraburi. Richy was the senior U.S. officer at the opening ceremony which signaled the start of the 11-day bilateral army-to-army exercise that strengthens capabilities and builds interoperability between U.S. and Royal Thai Army forces.



# Idaho Public Information Emergency Response Team



THE RIGHT INFORMATION • TO THE RIGHT PEOPLE • AT THE RIGHT TIME

During a natural or man-made disaster or emergency – individuals, families, and communities want and need accurate, timely, and relevant information before anything else. The Idaho Public Information Emergency Response Team (PIER) was originally created by executive order to ensure that the state of Idaho had a team of trained professionals from all sectors of government who could provide this resource at a moment's notice. The group of state agency public information officers trains throughout the year in the area of emergency management public information. The PIER team is the state of Idaho's Emergency Support Function 15 (ESF) and functions as the state's Joint Information System. The IOEM PIER team will play an essential role in the 2019 Operation Shared Response Exercise.

## PIER TEAM PARTNERS

Boise State University (BSU)  
Idaho Department of Commerce  
Idaho Department of Agriculture  
Idaho Transportation Department (ITD)  
Idaho Parks and Recreation  
Public Employee Retirement System of Idaho (PERSI)  
Idaho Department of Administration  
Office of the Governor  
Office of the Governor IT Services  
Nampa Schools  
College of Western Idaho (CWI)  
Idaho Fish and Game (IFG)  
Public Utilities Commission  
Nampa School District  
Idaho National Laboratory (INL)  
Idaho Department of Labor  
Idaho Tax Commission  
Idaho State Department of Education  
Idaho Office of Emergency Management (IOEM)  
Idaho National Guard (IDNG)  
Idaho Industrial Commission  
Idaho Department of Health and Welfare (IDHW)  
Idaho Department of Correction (IDOC)  
Idaho Department of Lands  
Department of Environmental Quality (DEQ)  
College of Southern Idaho (CSI)  
Boise School District



# IOEM Produces Earthquake Preparedness Video for Idaho Schools

---

## GREAT IDAHO SHAKEOUT PARTICIPATION CONTINUES TO GROW

---

IOEM continues to reinforce the agency's commitment to earthquake awareness and preparedness in Idaho, the country's 8th most seismically active state.

In 2018 IOEM produced the "Great Idaho ShakeOut" preparedness video – a video now available for schools throughout the state.

The video describes the causes, and effects of earthquakes, as well as instructions on what to do if you feel an earthquake. Drop, Cover and Hold On.

Also in 2018 more than 83,000 people signed up to participate in the Great Idaho Shakeout. The annual event is an important part of the larger October Earthquake Awareness Month program.



## Watch

the **NEW** Video @

<https://ioem.idaho.gov/Pages/Operations/GreatIdahoShakeOut.aspx>





Hurricane Michael – Florida EMAC



California Wildfires – EMAC







# Emergency Management Assistance Compact (EMAC) Deployments

Idahoans Assist with Hurricane Recovery Efforts in Florida and Devastating Wildfires in California. Mutual Aid Agreements between states makes such deployments possible.

Three IOEM staff members, along with seven Idahoans from state, county, and municipal agencies spent two weeks in Bay County Florida to assist with recovery efforts following Hurricane Michael. The category 4 hurricane made landfall October 10, 2018. Weeks later, IOEM coordinated another deployment involving dozens of Idaho firefighting personnel who assisted with recovery efforts following California's deadliest wildfires in that state's history.

***One of the most rewarding elements was how this team from Idaho was able to quickly and seamlessly function in a hurricane response situation. It really stood out to me how well the team worked together in such a dynamic environment.***

**Rob Feeley, IOEM North Central Area Field Officer**

This kind of assistance is made possible through the Emergency Management Assistance Compact (EMAC). Under the Emergency Management Assistance Compact (EMAC) mutual aid agreement, Idaho personnel are paid for their time and service by the requesting state.



# IOEM Training and Exercise Program

Simulating threat and hazards that communities across Idaho can face is one of the most important ways IOEM helps to prepare our local, state, and federal partners for unexpected events that can threaten both lives and the economic wellbeing of our state.

On July 18, 2018 the Transportation Security Administration (TSA), the Idaho Transportation Department (ITD), Boise Police Department, Boise Fire Department, and Ada County Paramedics and others were able to test their response protocols for an active assailant event. The functional exercise was planned and facilitated by IOEM to provide a realistic threat event for the agencies, and the opportunity for staff to benefit from Active Shooter training.

The official name for the exercise was the I-STEP Boise Highway Motor Carrier Full Scale Exercise (FSE) and was sponsored by the Transportation Security Administration (TSA).

I-STEP is TSA's Intermodal Security Training and Exercise Program. IOEM and ITD personnel acted as the

players in the exercise while the local emergency services responded to the operations-based active shooter incident.

Approximately two weeks prior to this exercise a tragic event occurred in Boise when an assailant instigated a knife attack against children and adults at a child's birthday party resulting in the death of a three-year-old girl and injuries to eight others. As a result IOEM determined it would be appropriate to reclassify the exercise as an active "assailant" rather than shooter.

## In 2018, the IOEM Training and Exercise Section provided:

- 63 Classes across the state
- Trained 1,000+ students
- Offered Foundations of Emergency Management Basic Academy courses at Idaho State University in Pocatello for emergency planners in Idaho
- Continues preparation for a multi-jurisdictional exercise involving six counties and multiple state agencies





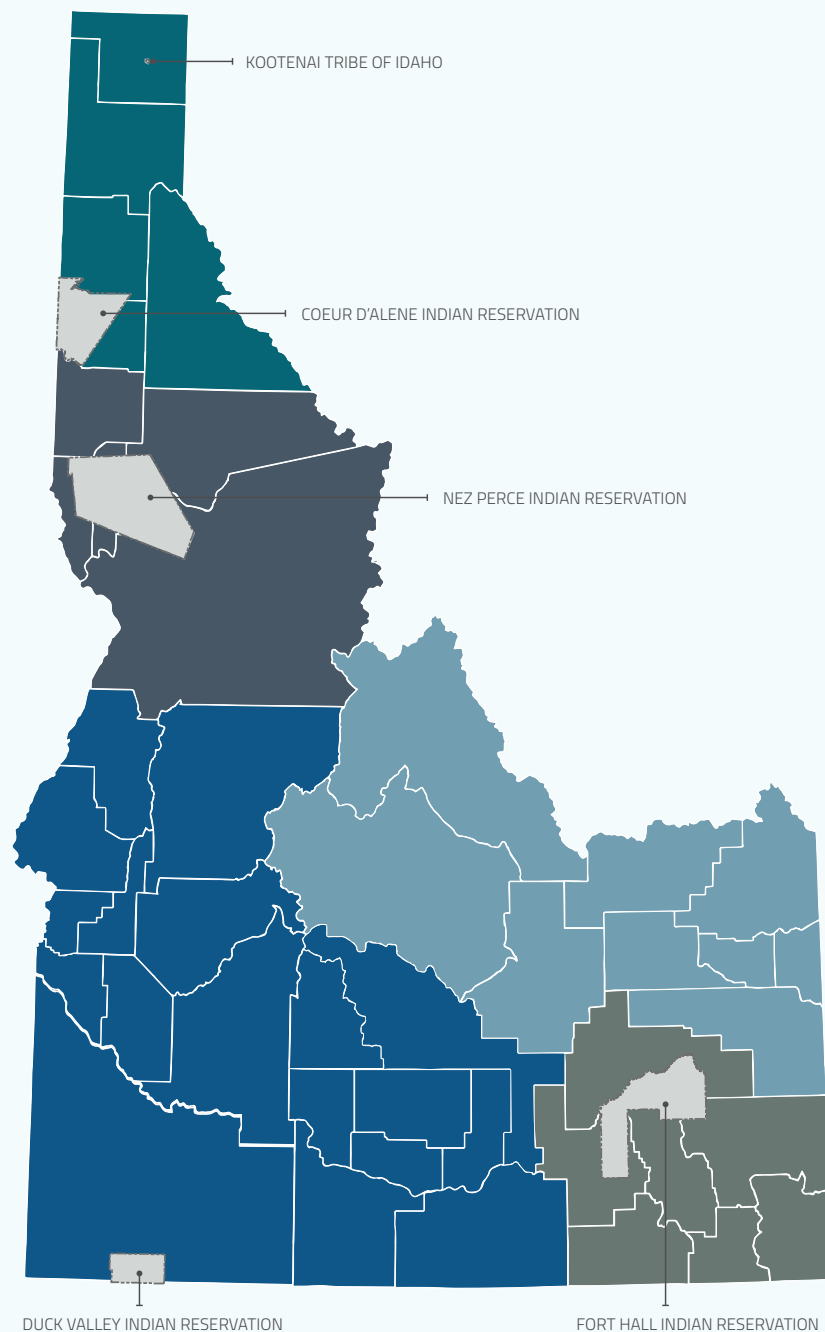


# Crude Oil Train Derailment Exercise

Another important exercise conducted in 2018 involved a scenario where a train carrying crude oil from North Dakota, often referred to as Bakken Crude Oil, derailed, causing a spill and fire. This volatile oil presents a significant threat to the multiple small communities, waterways, and pristine environment that surrounds the rail lines these trains use. IOEM and Bonner County sponsored the tabletop exercise to prepare the community in the event of such a derailment and spill. The tabletop, or discussion-based exercise, involved local, state, and federal government representatives, along with railroad private industry participants. More than 100 exercise players, controllers, and evaluators focused on issues surrounding a local disaster of this nature.

The eight hour exercise included discussions on issues such as the difficulties in fighting this type of fire, evacuations, and environmental and wildlife damage. The exercise will serve as the basis for a series of upcoming exercises which will get increasingly more complex, and will ultimately culminate in a full scale exercise.





# Area Field Office Regions

There are five Area Field Office Regions in Idaho:

- Northern Idaho Area
- North-Central Area
- South-Central/Southwest Area
- Northeast Area
- Southeast Area

Area Field Officers (AFOs) are subject matter experts on a wide variety of issues relating to Idaho's emergency management efforts, and how to effectively and seamlessly apply those efforts in geographically diverse communities around the state.

With the assistance of AFOs, local jurisdictions engage in mitigation efforts and are able to navigate the sometimes complex grant requirement process. AFOs provide essential support to the counties and Tribes including maintaining situational awareness of emerging threats and hazards, coordinating preparedness fairs and public outreach events, and facilitating local training and exercise opportunities.

*"The South-Central/Southwest Area Field Officers have been an incredible resource and support to each of their counties. Whether it be for grant assistance, damage assessment, local government insight, FEMA guidelines, and general day to day help, they offer a liaison between the Idaho Office of Emergency Management and our local emergency managers and elected officials. I believe strongly that with their level of knowledge and support, it only encourages us as EM's and enhances the productivity of our program for our county."*

*-Jackie Frey, Coordinator | Twin Falls County Office of Emergency Management*

## REGIONS

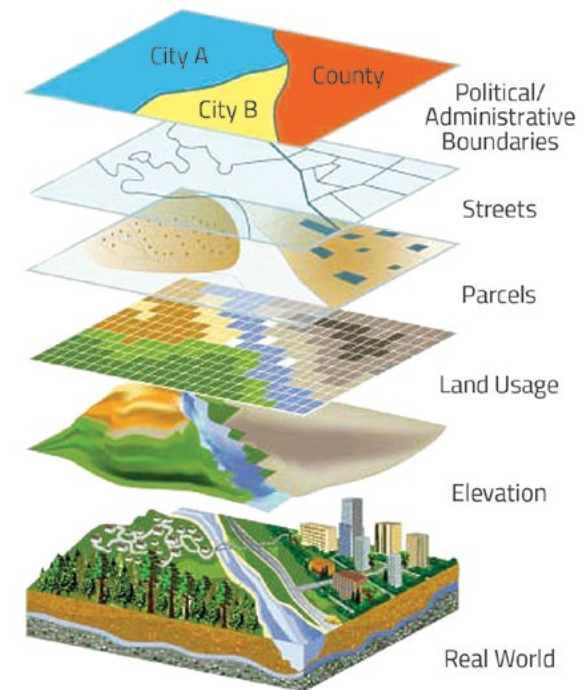
- |                 |                           |             |
|-----------------|---------------------------|-------------|
| ■ NORTH         | ■ NORTHEAST               | ■ SOUTHEAST |
| ■ NORTH-CENTRAL | ■ SOUTH-CENTRAL/SOUTHWEST |             |



# IOEM Geographic Information System (GIS)

All IOEM programs, along with state partners, counties, and Tribes rely on the GIS Section to provide the kind of visually contextual data that is vital during any kind of significant event. The GIS Section maintains the best available data from internal and external sources used for analysis and mapping.

During disasters, incident specific data can be developed both as a digital printable map, and an interactive map. These maps and data are provided to the EOC, the affected local jurisdiction, and the county emergency manager as well as the AFO (IOEM Area Field Officer). During the 2018 Rattlesnake Fire critical data was provided, and the local jurisdiction as well as responders had much higher level of risk and situational awareness. Collaboration and trusted partnerships are essential and allow us to provide near real-time information for planning and safety during disaster operations.



## RiskMAP

Mapping, Assessment, and Planning to keep communities safe

Knowledge is power. FEMA's RiskMAP Program Manager, through collaboration with State, Local, and Tribal entities, delivers high quality data that increases public awareness and leads to action that reduces risk and enhances community resilience. The program is a Cooperating Technical Partnership (CTP) between IOEM and FEMA that helps stretch limited federal mapping dollars and increases local community involvement in the creation of Digital Flood Insurance Rate Maps (DFIRMs). RiskMAP provides local officials with risk products, including risk

assessments using FEMA's Hazard United States (HAZUS) software, to help them better understand their risk, its potential impact and to guide local mitigation and outreach efforts. Once a risk project is initiated, FEMA and its mapping partners move forward with preparing the data, maps, and flood risk products for the communities. The program collects Light Detection and Ranging (LiDAR) spatial data to map areas of high risk. The project lifecycle is 5-10 years, and is tailored to the needs of each community and involves different products and services.

# Idaho Public Safety Communications Commission

The Idaho Public Safety Communication Commission is comprised of stakeholders appointed by the Governor. IOEM coordinates the activities of the commission, and helps to establish best practices and standardization as it relates to interoperability among public safety communications professionals and entities that serve communities throughout Idaho.

- FY 2017 Grants: released \$2,106,091 to counties and have paid out \$1,832,256. \$182,836 remains in the fund.
- FY 2018 Grants: released \$1,368,580 to counties and have paid out \$577,412. \$791,169 remains in the fund.
- FY 2019 Grants: \$2,731,746 has been released as of November 1, 2018.
- 40 counties participate in the grant fund program.
- IPSCC was formed July 1, 2016 from the IECC. Added representation to the new commission to balance stakeholder input, provide more local input (District Interoperability Governance Board [DIGB]). Now includes all of public safety (911 call taking, dispatch, radio, and broadband or data).
- 26 counties now have text to 911 live, 17 more are in the process of putting text to 911 in place.
- The commission has approved an RFP for Consultant Services in preparation of working on an RFP for Next Generation 911 for Idaho.
- The commission plans to request Federal Grant funds to help with the consultant RFP and laying the foundation for Next Generation 911 in Idaho.



**IPSCC**

## FY 2017 GRANTS

**\$2,106,091** Released to Counties

**\$1,832,256** Paid Out

**\$182,836** Remains in Grant Fund

## FY 2018 GRANTS

**\$1,368,580** Released to Counties

**\$577,412** Paid Out

**\$791,169** Remains in Grant Fund

## FY 2019 GRANTS

**\$2,731,746** Will be Released

**40** counties  
PARTICIPATE IN GRANT FUNDS



**DIGB** (DISTRICT INTEROPERABILITY GOVERNANCE BOARD)  
includes ALL of PUBLIC SAFETY



TEXT



LIVE

**26**

COUNTIES  
ARE LIVE

**17**

COUNTIES ARE  
IN PROCESS



IDAHO IS MOVING FORWARD  
ON THE STATE PLAN FOR

**NG911**  
(Next Generation 911)



# IOEM Unveils New Ida Book Written with Idaho First Lady Lori Otter

The children's book is the latest in a series of books focusing on the unique aspects of the Gem state.

When children learn about safety at an early age they are much more likely to retain that information for a lifetime.

IOEM worked with former Idaho First Lady Lori Otter in 2018 on a book geared toward young children that explains in a fun and easy to understand way how to reduce their exposure to the threats, hazards and risks that we encounter in Idaho.

*Ida Prepares – A Year in Emergency Preparedness with Ida and Tank* – is the latest in a series of books featuring a young Idaho girl who shares her experiences of living in Idaho. The popular children's books include exercises and puzzles to help elementary school-aged children reinforce the lessons learned in the book.

**“When children learn how to be responsible for their actions, and aware of how to stay safe, they can be incredibly smart, responsible and resilient.”**

Lori Otter, Idaho First Lady 2007-2018



## Read **Ida Prepares!**

Ida Prepares is available at many Idaho Libraries and schools and can also be read online by going to [www.ioem.idaho.gov](http://www.ioem.idaho.gov)

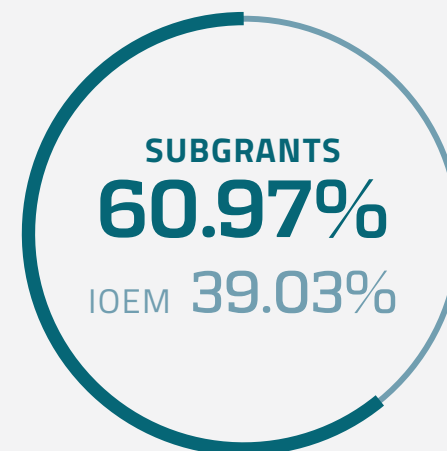


# Grants Branch

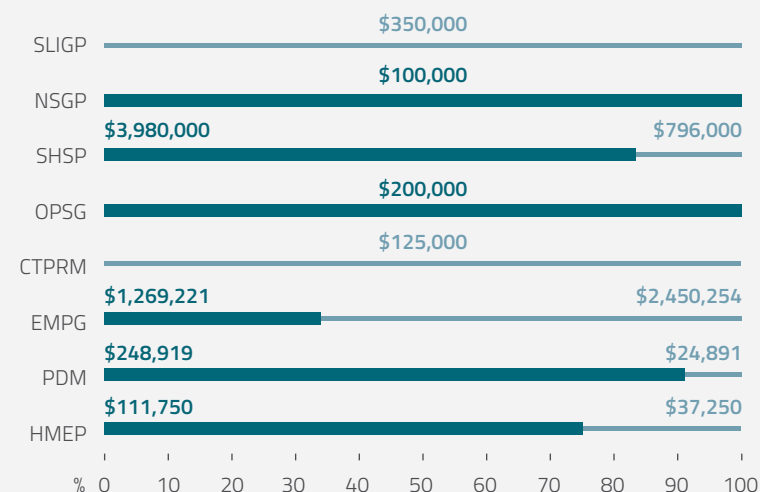
The Grants Branch within IOEM includes Hazmat Special Teams, Logistics, and Recovery. This critically important branch conducts grant management activities, activates for the Idaho Emergency Operations Center, and coordinates resources, before, during, and after a disaster. As the State of Idaho's Administrative Agency for multiple preparedness, mitigation, and disaster federal grant programs, the IOEM Grants Branch allocates the majority of federal funding it receives to local jurisdictions, first responders, and tribes. This funding sustains, and supplements local emergency management and homeland security programs. The IOEM Logistics section is responsible for coordinating the purchase of Homeland Security Grant equipment and disaster logistics needs.

- The Grants section applies for funding, and passes much of that funding on to local jurisdictions throughout Idaho.
- Issued 270 subrecipient awards for Homeland Security and Emergency Management Preparedness Grants.
- Provided technical assistance to subrecipients for subgrant awards.
- Conducted annual risk assessment of all jurisdictions receiving pass-through Federal funds.
- Assisted local jurisdictions with Environmental Planning and Historic Preservation Compliance (EHP).
- Responded to activations of the State Emergency Operations Center during disasters.
- Participated in Exercises, including an active shooter exercise conducted at Borah High School.
- Expended Homeland Security Grant pass-through funding of \$2,291,221 for equipment located and utilized throughout local jurisdictions, special teams and tribes to support core capabilities and to provide resources required to support the implementation of the National Preparedness System and the goal of a secure and resilient nation.

## 2018 IDAHO OFFICE OF EMERGENCY MANAGEMENT GRANTS TOTAL



### 2018 IOEM FEDERAL GRANTS

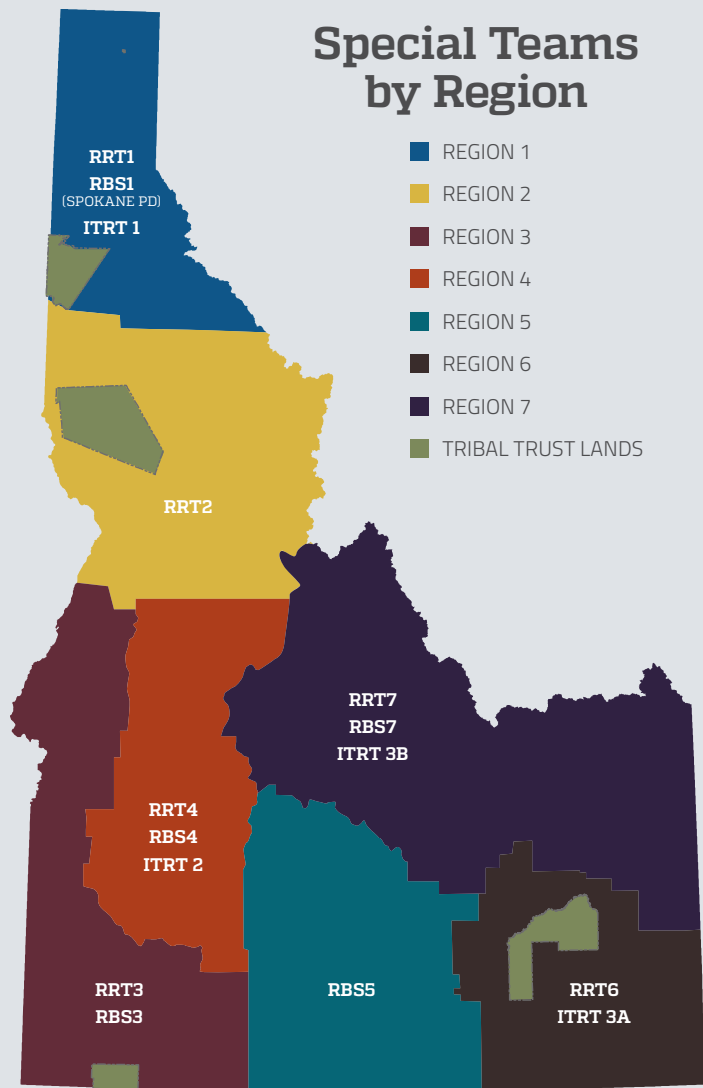


All grant funds cover multiple fiscal years.

SLIGP: State and Local Implementation Grant Program  
 NSGP: Non-Profit Security Grant Program  
 SHSP: State Homeland Security Program  
 OPSG: Operation Stone Garden  
 CTPRM: Cooperating Technical Partners RiskMAP Program  
 EMPG: Emergency Management Program Grant  
 PDM: Pre-Disaster Mitigation Program  
 HMEP: Hazardous Materials Emergency Preparedness Program



## Special Teams by Region



**RRT:** REGIONAL HAZMAT RESPONSE TEAM

**RBS:** REGIONAL BOMB SQUAD

**ITRT:** IDAHO TECHNICAL RESCUE TEAM

**IIMAST:** IDAHO INCIDENT MANAGEMENT AND SUPPORT TEAM

## Hazmat and Special Teams

Providing cost recovery to local governments for expenses associated with responding to hazardous materials incidents in communities throughout the state.

- The state's Hazmat plan was activated in November to secure resources, and effectively coordinate the response, following a deadly explosion at a hazardous waste facility in Owyhee County.
- Facilitated coordination among state and federal partner agencies following an incident involving a radioactive waste storage drum in Bonneville County in May.
- Managed the annual Tier II reporting period and distributed the latest Tier II information to local responders, emergency managers, and the regional Hazmat teams.
- Continued to develop the Idaho Preventative Rad/Nuclear Detection Program by securing a portal monitor for Idaho State Police (ISP) and developing various documents for use in detections and protecting special events.
- Provided ICS training for our Pacific Rim partners who were meeting in Boise for the Asia-Pacific conference.
- Sponsored and participated in the Boise meeting of the Northwest Area Committee Meeting with EPA, US Coast Guard, Oregon and Washington officials focusing on oil and Hazmat spills.
- Planned, developed, sponsored, and hosted a tabletop exercise in Bonner County that brought together more than 120 individuals from the first responder and emergency management communities at both the state and local levels to discuss how the region would respond to a significant Crude Oil Train derailment.
- Instructed Incident Management Team course in Lewiston to help establish north Idaho component of the Idaho Incident Management and Support Team.

## WebEOC

WebEOC use by the emergency management community in Idaho continued to expand in 2018. The information sharing platform is an essential tool in keeping and maintaining a common operating picture in a disaster or emergency.

Many highway districts use WebEOC to document road closures and notify district partners of the closures.

New mapping functionality will be implemented in almost WebEOC 300 boards allowing counties to display spatial information like damage assessments.

Seven counties successfully tested the use of a new damage assessment reporting process that will be implemented in all 44 counties by the end of the year.

Counties, hospitals and health districts are finding unique ways to leverage WebEOC functionality.



## FirstNet

---

**New network promises to offer highly competitive mobile services to meet the growing population, increased data demand, and connectivity within Idaho.**

---

Idaho continues to be at the forefront of a nationwide effort dedicated to ensuring that the first response community is able to communicate seamlessly. First Responder Network Authority (FirstNet) launched both enhanced response services, and a new dedicated CORE network that includes robust high speed data capabilities combined with the highest security. In 2018 The IOEM SLIGP team coordinated with public safety entities, communications governance bodies, and network providers across the state. Many public safety entities in all regions of Idaho are testing and considering use of this new network. Some agencies have already adopted FirstNet as their mobile broadband provider. Network infrastructure construction and current cellular network improvements are ongoing and will continue over the next 2-4 years.

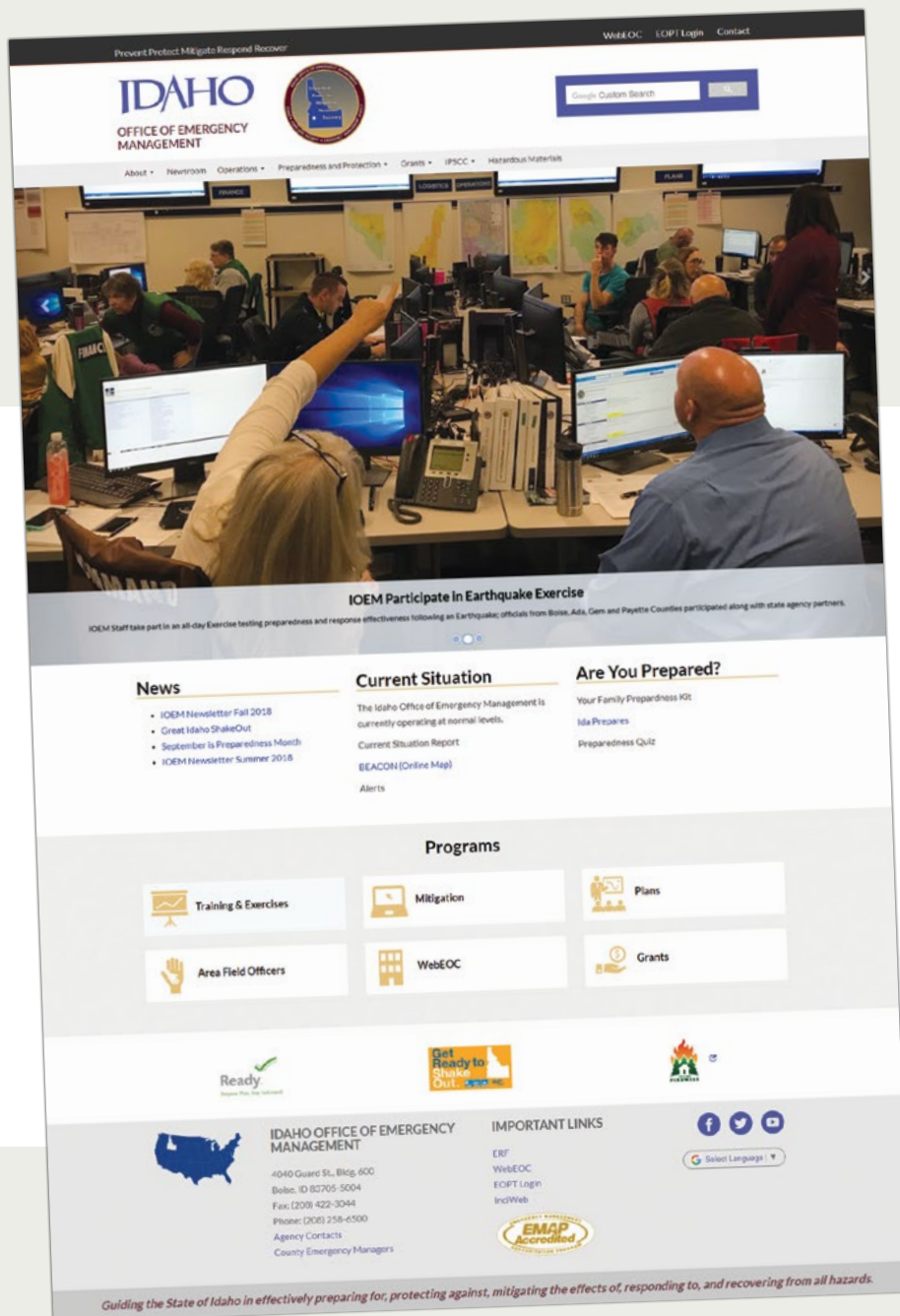
## IOEM Selected to Participate in National Governor's Association Program to Enhance Energy Resilience

After a competitive application process, IOEM was chosen by the National Governor's Association (NGA) to participate in a pilot program to enhance energy resilience in Idaho. As part of the pilot program, NGA created the State Resiliency Assessment and Planning tool (SRAP) designed to allow states to better assess their energy resiliency.

IOEM created a SRAP working group, including the Office of Governor Otter, the Office of the Lieutenant Governor, the Idaho Office of Energy and Mineral Resources, the Idaho Public Utilities Commission and the Department of Homeland Security to complete the tool and work to create a consistent vision of the status of Idaho's Energy Resilience.

In November, NGA hosted a two day retreat with members of the SRAP working group as well as leaders of energy providers across Idaho. The retreat was an excellent opportunity for energy stakeholders from the public and private sector to discuss energy infrastructure, resiliency, redundancy, and to create better working relationships.





# Looking Ahead ...

## New IOEM Website

Redesign Enhances Agency's Ability  
to Best Serve Stakeholders

Each month thousands of people visit the IOEM website for information on preparedness measures, news events, training and exercise opportunities, the availability of grants, and countless other issues that are critically important to the public, and the emergency management community. This year IOEM unveiled a redesigned website that improves visitors' navigation efforts. The website also allows IOEM to showcase timely images relating to seasonal safety messaging. In the coming months IOEM will begin showcasing videos to further promote the agency's mission areas.



4040 W. Guard Street, Building 600 Boise, Idaho 83705-5004  
(208) 258-6500 [www.ioem.idaho.gov](http://www.ioem.idaho.gov)

Follow us on  and  @IdahoOEM